



# INDOFINE Chemical Company, Inc.

121 Stryker Lane, Bldg. 30, Suite 1 • Hillsborough, NJ 08844 • U.S.A.

Phone: (908) 359-6778 • FAX: (908) 359-1179

website: [www.indofinechemical.com](http://www.indofinechemical.com)

e-mail: [chemical@indofinechemical.com](mailto:chemical@indofinechemical.com)

## CERTIFICATE OF ANALYSIS

Catalog Number: 22-412

Product Name: **HIBIFOLIN**  
(Gossypetin 8-glucuronide; 3,3',4',5,7,8-Hexahydroxyflavone 8-glucuronide)

CAS Number: [55366-56-8]

Lot Number: 1505605

Chemical Formula: 494.37

Molecular Weight: C<sub>21</sub>H<sub>18</sub>O<sub>14</sub>

Appearance: Yellow powder

Solubility: Soluble in DMSO

TLC: n-Butanol:Acetic acid (1:1)

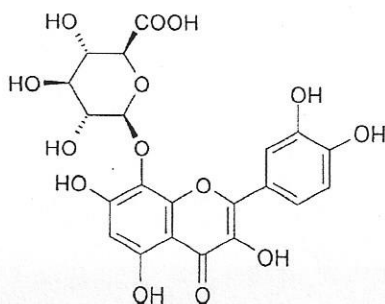
NMR Spectrum: Enclosed (conforms to the structure)

Mass Spec: Complies

IR: Complies

Storage: Store in a cool, dry place

Purity(HPLC): 94.08%





# INDOFINE Chemical Company, Inc.

121 Stryker Lane, Bldg. 30, Suite 1 • Hillsborough, NJ 08844 • U.S.A.

Phone: (908) 359-6778 • FAX: (908) 359-1179

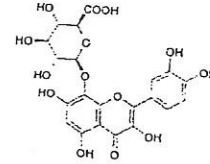
website: [www.indofinechemical.com](http://www.indofinechemical.com)

e-mail: [chemical@indofinechemical.com](mailto:chemical@indofinechemical.com)

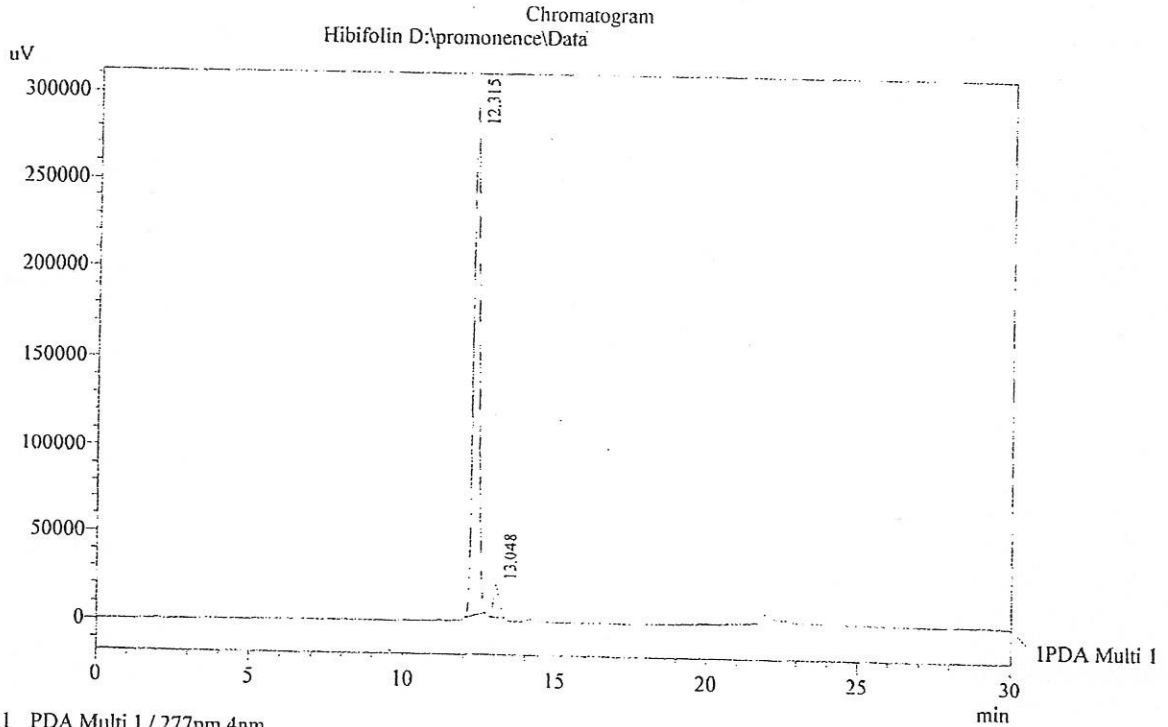
## HPLC ANALYSIS

Acquired by : Admin  
Sample Name : Hibifolin  
Sample ID : 10 gm  
Injection Volume : 20 uL  
Data Filename : 230415D.lcd  
Method Filename : GSP-I.lcm

Catalog No.: 22-412  
Product Name: Hibifolin  
Lot No.: 1505605



Column : Inertsil-ODS-3V  
Flow : 1.000 mL/min.  
Mobile Phase : A(0.05% TFA in Water) B(Acetonitrile)  
0.01 90 10  
1.0 90 10  
7.0 68 32  
14.0 68 32  
20.0 10 90  
25.0 10 90  
28.0 90 10  
30.0 90 10  
Diluent : Mobilephase



1 PDA Multi 1 / 277nm 4nm

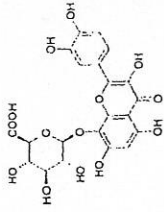
Peak Table

Peak#	Name	Ret. Time	Area	Area %	Relative Retention Time
1	RT:12.315	12.315	3897742	94.08	1.00
2	RT:13.048	13.048	245291	5.92	1.06
Total			4143033	100.00	



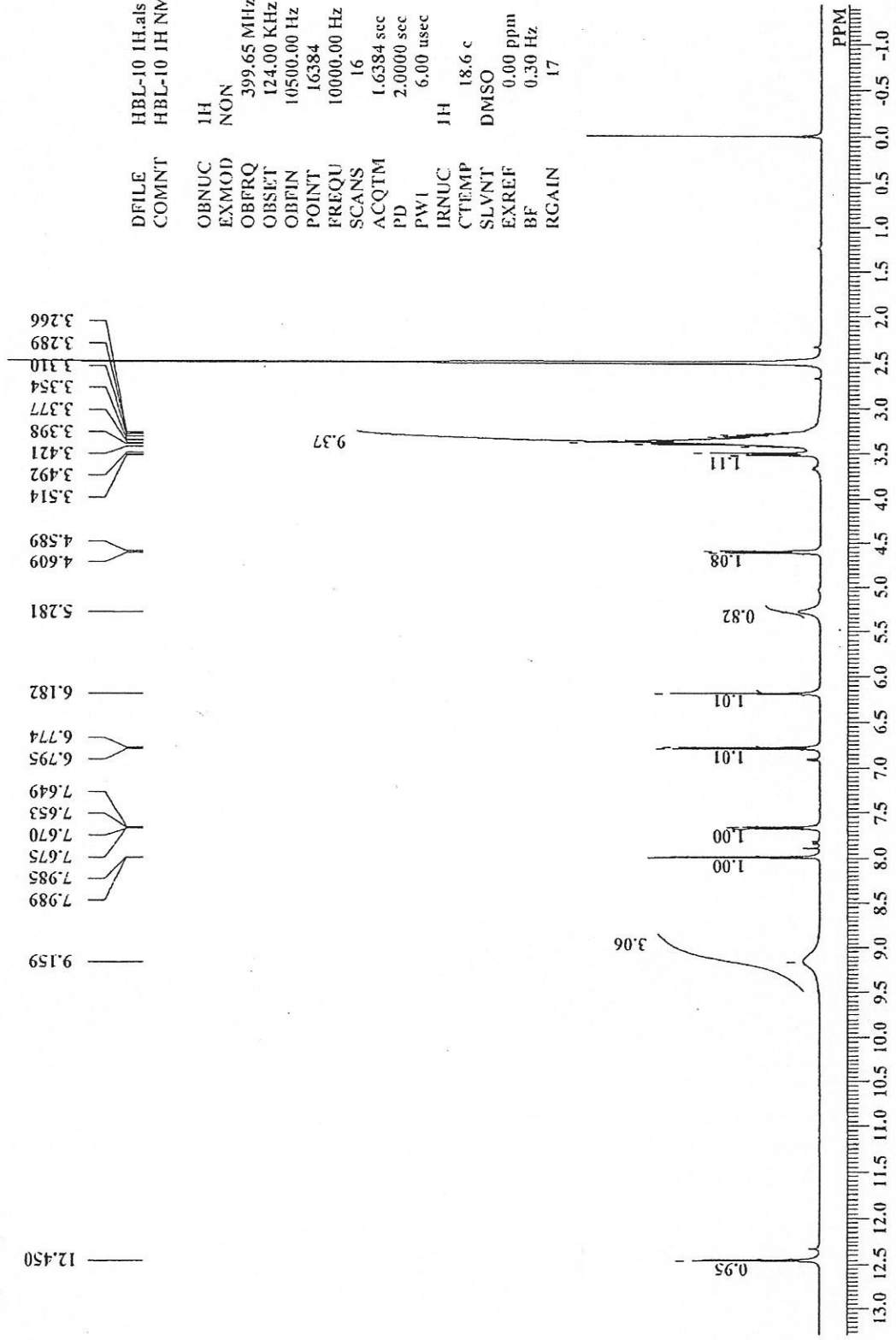
INDOFINE Chemical Company, Inc.  
121 STRYKER LANE  
BLDG. 30, SUITE 1  
HILLSBOROUGH, NJ 08844

Catalog No.: 22-412  
Product Name: Hibifolin  
Lot No.: 1505605



HBL-10 1H NMR DMSO-d6

Analysed By : GBR



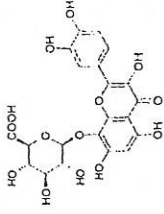
DFILE HBL-10 1H.als  
COMINT HBL-10 1H NMR DMSO-d6

OBNUC 1H  
EXMOD NON  
OBFRQ 399.65 MHz  
OBSET 124.00 KHz  
OBFIN 10500.00 Hz  
POINT 16384  
FREQU 10000.00 Hz  
SCANS 16  
ACQTM 1.6384 sec  
PD 2.0000 sec  
PWI 6.00 usec  
IRNUC 1H  
CTEMP 18.6 c  
SLVNT DMSO  
EXREF 0.00 ppm  
BF 0.30 Hz  
RGAIN 17



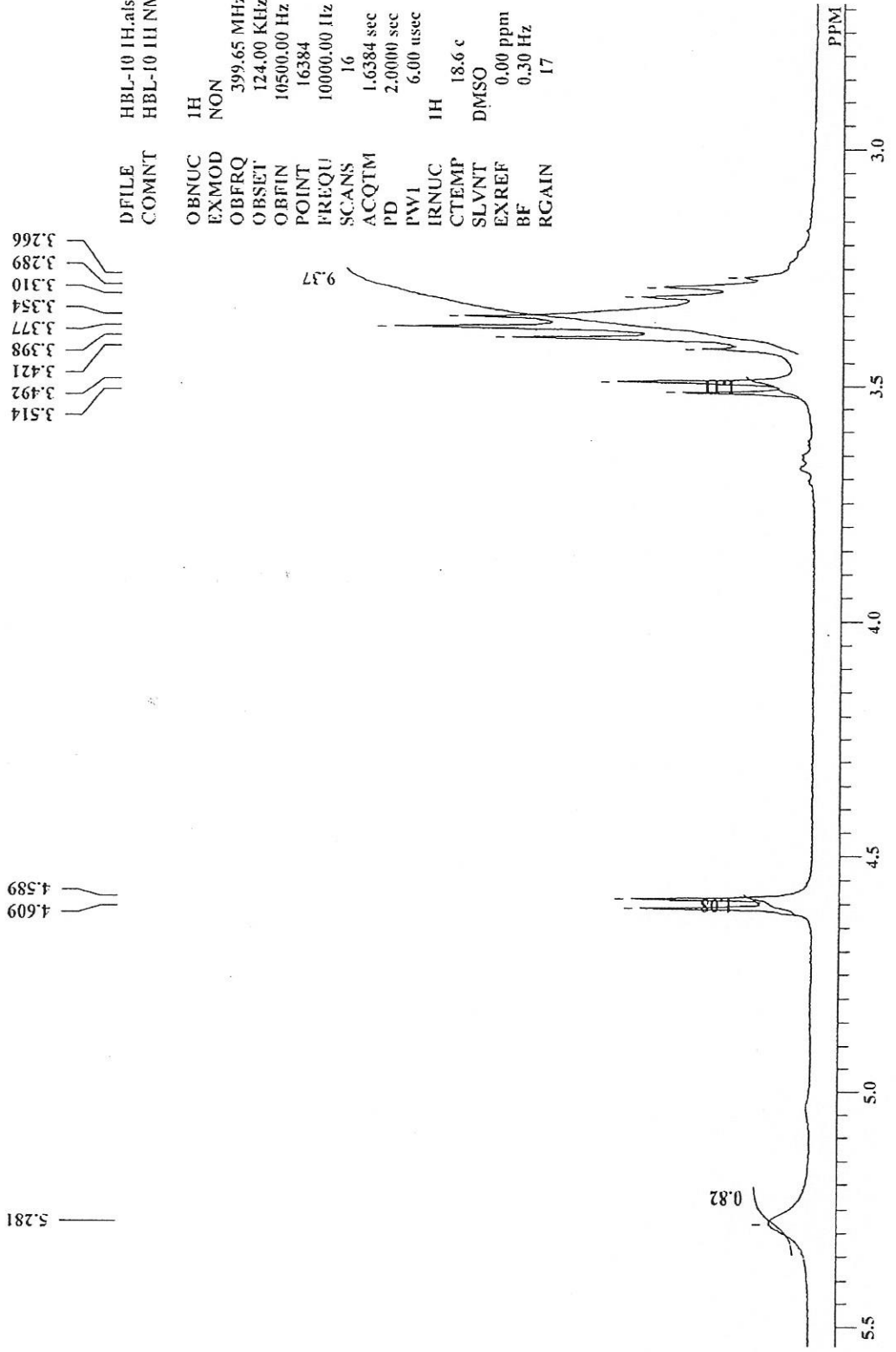
INDOFINE Chemical Company, Inc.  
121 STRYKER LANE  
BLDG. 30, SUITE 1  
HILLSBOROUGH, NJ 08844

Catalog No.: 22-412  
Product Name: Hibifolin  
Lot No.: 1505605



HBL-10 1H NMR DMSO-d6

Analysed By: GBR



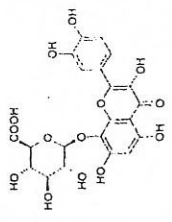
DFILE HBL-10 1H.nls  
COMINT HBL-10 1H NMR DMSO-d6

OBNUC 1H  
EXMOD NON  
OBFRQ 399.65 MHz  
OBSET 124.00 KHz  
OBFIN 10500.00 Hz  
POINT 16384  
FREQU 10000.00 Hz  
SCANS 16  
ACQTM 1.6384 sec  
PD 2.0000 sec  
PWI 6.00 usec  
IRNUC 1H  
CTEMP 18.6 c  
SLVNT DMSO  
EXREF 0.00 ppm  
BF 0.30 Hz  
RGAIN 17

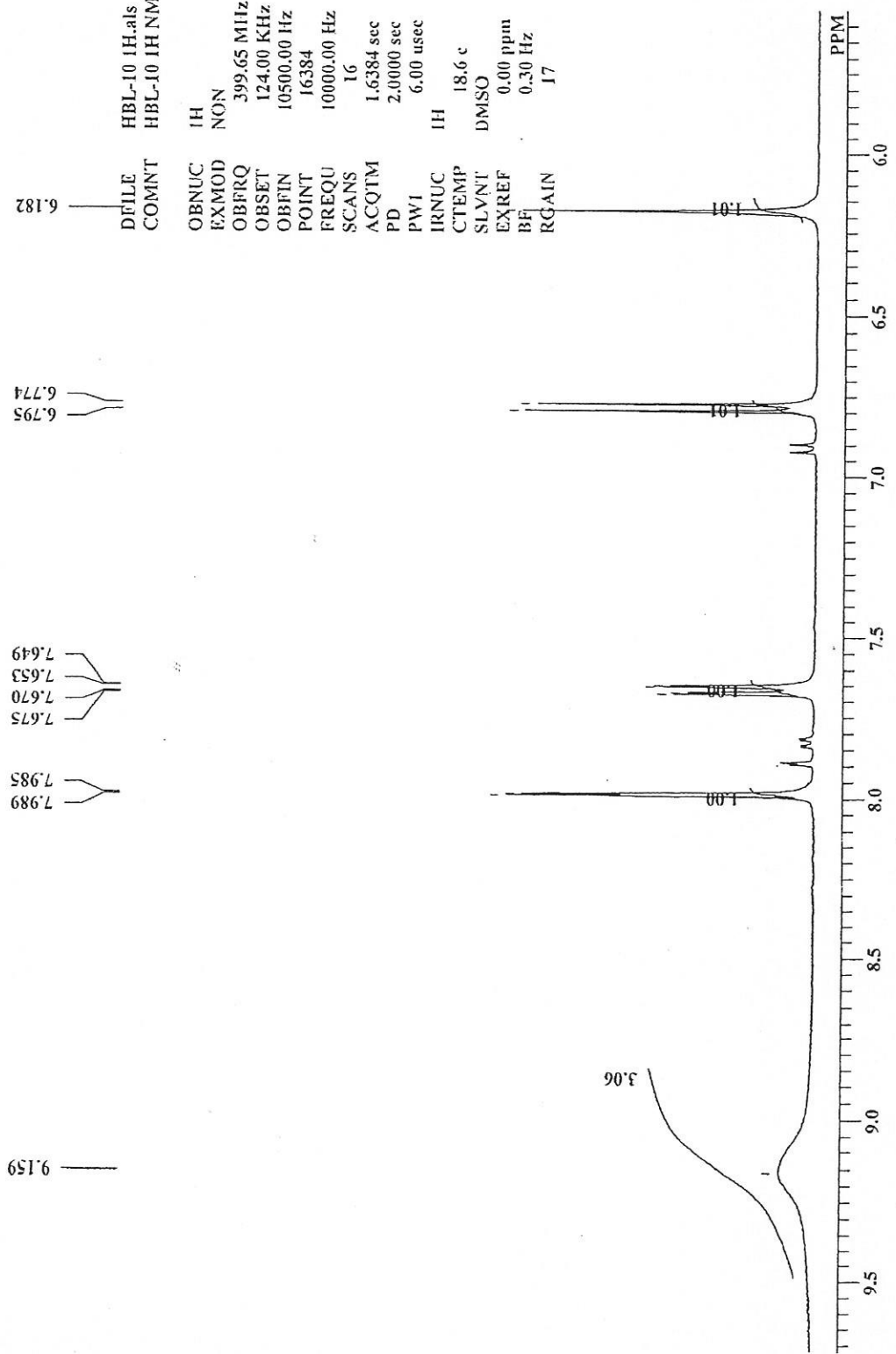


INDOFINE Chemical Company, Inc.  
 121 STRYKER LANE  
 BLDG. 30, SUITE 1  
 HILLSBOROUGH, NJ 08844

Catalog No.: 22-412  
 Product Name: Hibifolin  
 Lot No.: 1505605



HBL-10 1H NMR DMSO-d6  
 Analysed By : GBR



HBL-10 1H.als  
 HBL-10 1H NMR DMSO-d6

FILE  
 COMNT

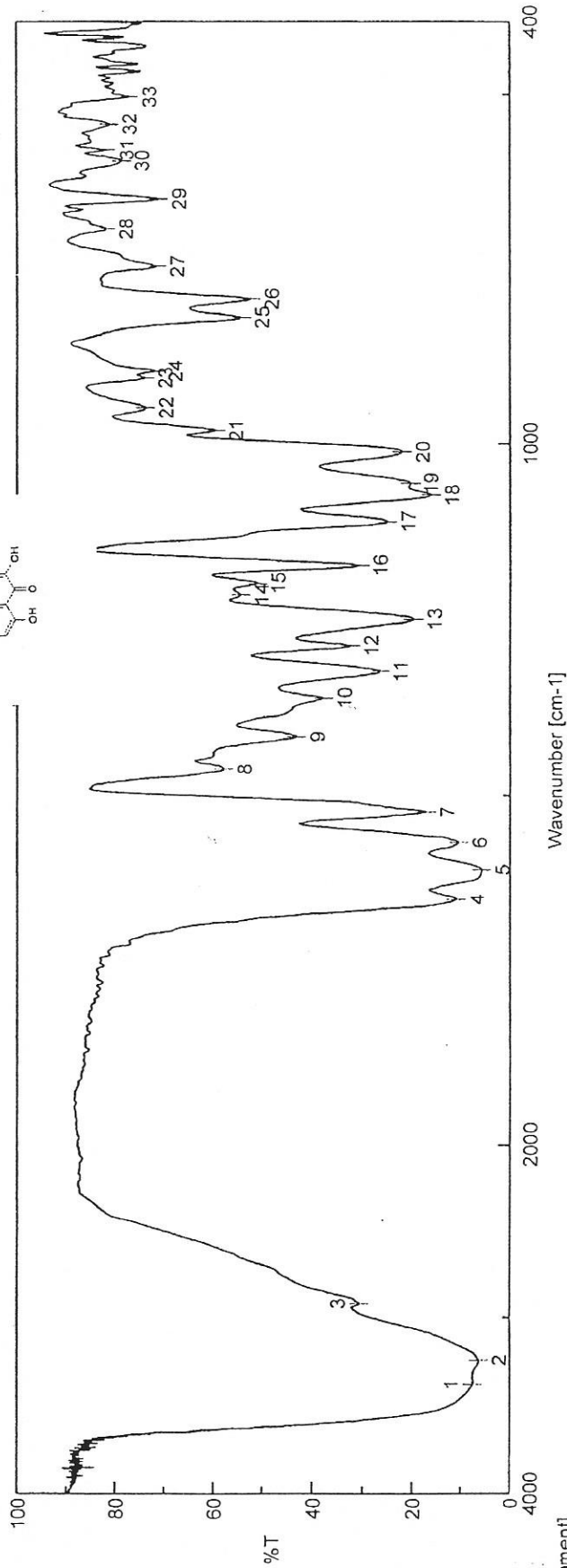
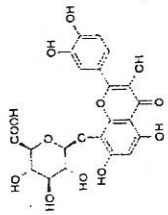
OBNUC IH  
 EXMOD NON  
 OBFREQ 399.65 MHz  
 OBSET 124.00 KHz  
 OBFIN 10500.00 Hz  
 POINT 16384  
 FREQU 10000.00 Hz  
 SCANS 16  
 ACQTM 1.6384 sec  
 PD 2.0000 sec  
 PW1 6.00 usec

IRNUC IH  
 CTEMP 18.6 c  
 SLVNT DMSO  
 EXREF 0.00 ppm  
 BF 0.30 Hz  
 RGAIN 17



INDOFINE Chemical Company, Inc.  
 121 STRYKER LANE  
 BLDG. 30, SUITE 1  
 HILLSBOROUGH, NJ 08844

Catalog No.: 22-412  
 Product Name: Hibifolin  
 Lot No.: 1505605



[Comment]  
 Sample Name HBL-10  
 Comment KBr Pellet  
 User DRNP  
 Division QC

[Data Information]

Data array type Linear data array  
 Horizontal Wavenumber [cm-1]  
 Vertical %T  
 Start 349.053 cm-1  
 End 7800.65 cm-1  
 Data pitch 0.964233 cm-1  
 Data points 7729

k Picking	
No. Position	Intensity
1	3380.6
6	1567.8
11	1322.9
16	1173.5
21	980.6
26	793.6
31	580.5
32	542.9
33	503.3

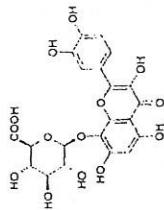
No. Position	Intensity	No. Position	Intensity
2	3243.7	4	1650.8
7	1523.5	9	1415.5
12	1286.3	14	1214.9
17	1111.8	19	1057.8
22	946.9	24	893.8
27	748.2	29	650.9
32	542.9	33	503.3
3	2922.6	5	1606.4
8	1461.8	10	1361.5
13	1249.6	15	1198.5
18	1074.2	20	1011.5
23	903.5	25	819.6
28	694.2	30	596.9
33	503.3	33	503.3

No. Position	Intensity
5	5728
10	37585
15	50879
20	21766
25	54056
30	78427



INDOFINE Chemical Company, Inc.  
121 STRYKER LANE  
BLDG. 80, SUITE 1  
HILLSBOROUGH, NJ 08844

Catalog No.: 22-412  
Product Name: Hibifolin  
Lot No.: 1505605



Sample Information  
Sample Name : HBL-10  
Batch No : -  
Data File : HBL-10.lcd  
Method File : Test1(ESI).lem  
Acquired by : K.Kiran

MIS Spectrum Graph

Probe : ESI  
Polarity: Pos

Intensity

100 495.0

50

480.9

Probe : ESI  
Polarity: Neg

Intensity

100

492.9

50

245.9

